



**HUBBELL**  
Lighting

# tradeSELECT® LIGHTING



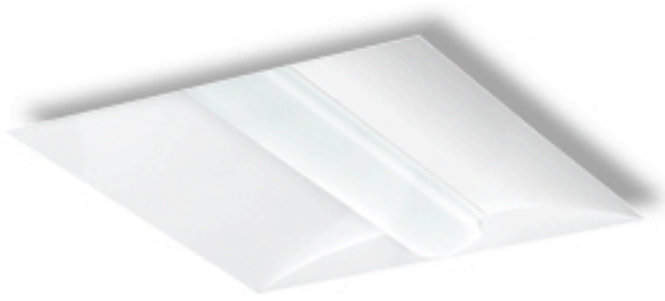
DESIGNED FOR THE CONTRACTOR, tradeSELECT® PRODUCTS ARE A COLLECTION OF HUBBELL LIGHTING'S VALUE FOCUSED SOLUTIONS.

**Simple**  
Popular no-frills designs

**Convenient**  
All tradeSELECT® products are stocked which means immediate availability

**Reliable**  
Products from the trusted brands of Hubbell Lighting

SOME OF THE PRODUCTS OFFERED UNDER THE TRADESELECT LINE INCLUDE:



**CCL Center-Lens Troffer**

**DESCRIPTION**

CCL provides both design and value with an architectural appearance, LED technology to reduce maintenance and is available in 2'x2' and 2'x4' sizes.

**FEATURES**

3,300 - 5,000 lumens | Up to 118 lumens per watt | Choice of two color temperatures

**CSL Striplight**

**DESCRIPTION**

The CSL LED striplight brings together an economical price point and high performance available in 4ft and 8ft lengths

**FEATURES**

4,000 and 8,000 nominal lumens | Up to 112 lumens per watt | Choice of two color temperatures



**CWP Wrap Luminaire**

**DESCRIPTION**

An efficient 4' LED wrap style fixture that provides an economical solution for exceptional light distribution in general areas.

**FEATURES**

4,000 nominal lumens | Up to 124 lumens per watt | Choice of two color temperatures

For more information, contact your Colonial Sales Representative or Local Branch Representative.

